

Historic, Archive Document

Do not assume content reflects current scientific knowledge, policies, or practices.

LIBRARY
RECEIVED
41
Horticulture



PINK VELVET Grown in 8-inch pot. Excellent soft pink of fine cordlike tubular petals. Splendid pot and garden variety. Medium height with normal blossoming period around Nov. 1st on.
35c each; \$3.50 per dozen.

SUNNYSLOPE 'MUMS GARDENS

3018 Huntington Drive, at San Gabriel Blvd., San Gabriel, Calif.

PLANTS: April to July

♦ Telephone ATLantic 2-1364

♦ **SHOW:** October and November



Gwen Patton

Best pink in the commercial large incurve we know of. Good keeping quality. Should rank it at top for late October pink. For commercial growers who make long distance shipping we recommend this variety strongly. Height 4 feet tall. Matures late October. PRICE 50c each; \$5.00 per doz.



Bunbu

Dark orchid-lavender. Proven excellent for cut flowers after several years of growing. Ideal stems and foliage. Height 5 feet. Matures Nov. 1st on. Price 25c each; \$2.50 per dozen.

Nightingale (Green)

A cut-flower sensation of Los Angeles Market. This variety is rare novelty for anybody's collection. Retain latest bud for best results. Should also be protected from strong sunshine. Blooms around Oct. 25th on. Height 4 ft. Price \$1.00 each.



TERMS OF SALE

(Read carefully before ordering)

The following price list cancels all previous quotations.

PRICES: All prices quoted are for ROOTED CUTTINGS F. O. B. San Gabriel, California, plus 3% sales tax within State.

PAYMENTS: Cash must accompany with all orders including the carriage charges if preferred shipments by Parcel Post. Remittance may be made by check, certified check, postal or express money orders. Do not send currency unless by registered mail.

SHIPMENTS: All shipments below \$5.00 in value will be made by Parcel Post unless instructed otherwise by the purchaser. All orders above \$5.00 will be shipped by Railway Express.

CARRIAGE AND PACKING CHARGES: There is no packing charge, but carriage charges will be paid by the purchasers at all times. Orders by Parcel Post should include postage at the rate of 10c for the first dozen cuttings, 4c for each additional dozen.

NOTICE will be mailed to you upon receipt of your order if we are unable to ship immediately.

CLAIMS: No complaints entertained unless made in writing immediately upon receipt of goods. Absolutely no adjustment will be made on complaints made later than 10 days after arrival of goods.

NON-WARRANTY: While we endeavor to use every possible care to have all varieties properly labeled and true to name, but like all dealers in similar trade, we give no warranty, express or implied, as to the crop, its variety or product of which we have no control.

PLEASE NOTE: 12 of one NAME is quoted at dozen rate; 30 at 100 rate; and 250 at 1000 rate.

BLOSSOMING SEASON. The blooming season of the different varieties are defined in our catalog as follows:

(E)—For those blooming up to October 25th.

(M)—For those blooming between October 25th to November 10th.

(L)—For those blooming from November 10th into January.

(These are all approximate dates because the blossoming season of chrysanthemums are governed by the year's weather condition. An early approach of cool fall weather will hasten the flowers. Also they will open much earlier in the cooler Northern Section than they do in the Southern States.)

OUR SELECTIONS. Customers who are not familiar with the names listed in our catalog, often send in orders asking us to ship plants of our selection. In making such orders, please note carefully the types wanted, your preference of colors and the blooming period. We will then send out plants which will best meet your requirements and most suitable to your locality.

COLOR VARIATIONS. Colors given in our catalog, particularly the pink and bronze of the early blooming varieties vary some season under different weather conditions. Experiences show that the colors are more distinct when grown in cooler district or when flowers bloom after the approach of cooler weather. Similar differences occur sometimes when grown in the Southern States and that in the Northern States even though the same variety has been sent out from us.

SIMILAR VARIETIES. We receive sometimes complaints regarding that the varieties, "Harvard," "Garnet King," and even "Helen Hubbard" which we have sold are identical and that the difference is imperceptible to warrant their different names used. When varieties are grown in sprays, it is sometimes difficult to detect the differences and therefore advisable for the beginners to select their plants from the wider range of colors rather than to limit your selections when purchasing several plants.

SUNNYSLOPE'S

Introductions for 1941



Miss Marguerite Laesser

Best early pink in this type we know of. Very good grower and will not fade. Height medium. Blooms Oct. 15th on. Price 35c each; \$3.50 per dozen.

Garson Introduction

DR. PHILLIP S. DOANE. Very large single type. Color deep wine red with pinkish-silver reverse. This variety was first exhibited at Pasadena fall flower show of 1939, and was personally selected by the late Dr. Doane, then the President of the Association. Will develop into 8-inch diameter flower when disbudded. 50c each; \$5.00 per doz.

ORCADIA. Single type. Color popular buff-orange. Very splendid growing habit. This variety is named after the originator's native town in Scotland. Price 50c each; \$5.00 per doz.

Dr. Phillip S. Doane



Orcadia



DAIKINKA (Sunnyslope). Imported variety. Large, red and gold exhibition incurved type. Height medium. Blooms around October 25th on. Price, \$1.00 each.

FALON KIRK (Sunnyslope). (38-59) Very large white exhibition type of Japanese incurved variety. Height medium. Blooms around October 20th on. Price 50c each; \$5.00 per dozen.

KATHERINE LOUISE (Sunnyslope). (Sp. 66). Pink spider variety. See illustration.

LAVENDER QUEEN (Sunnyslope). (Sp. 113) Excellent lavender medium tubular spider variety. We recommend this for pot culture. Height short. Blooms around November 1st on. Price 50c each; \$5.00 per dozen.

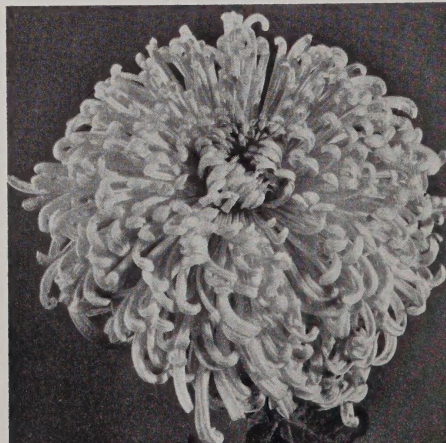
MISS MARGUERITE LAESSER (Sunnyslope). Best pink in early single variety. See illustration.

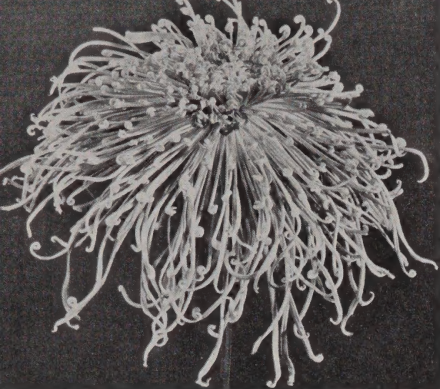
ROSE QUEEN (Sunnyslope). Deep rose of large tubular spider type. Our latest imported variety of special merit. Height short. Blooms around Nov. 1st on. Price 75c each; \$7.50 per dozen.

SUNNYSLOPE BRONZE (Sunnyslope). Golden bronze commercial variety. See illustration on back cover.

Katherine Louise (Sp-66)

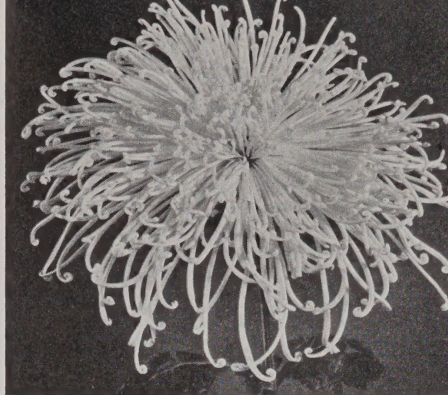
Large tubular spider type of very lovely pink shade possessing extremely strong stem. Medium height and blossoms around October 25th on. Price 75c each; \$7.50 per dozen.





←
AZUMA. Best bronze flower for exhibition. Medium tubular petals. Height about 4 feet. Blossoms midseason. Price 35c each; \$3.50 per doz.

→
SAN MARINO. This splendid yellow spider variety has been very popular during our show because of the uniformity of petals. We recommend this variety for both pot culture and as cut flower growing. Height 4 feet tall. Matures around Nov. 5th on. PRICE 50c each; \$5.00 per dozen.



Collection Offer A
SPIDER VARIETIES

One each of the following:

KATHERINE LOUISE	AZUMA HAKKEI
SAN MARINO	ROSE QUEEN
ARCTIC	NIGHTINGALE

Catalog price \$3.60

Collection Offer.....

\$3.00



CERTAINTY. Largest late bronze. Very good foliage and stem. Height about 4 feet. Blooms Nov. 15th on. Price 25c each; \$2.50 per doz.

Collection Offer B
EXHIBITIONS & COMMERCIALS

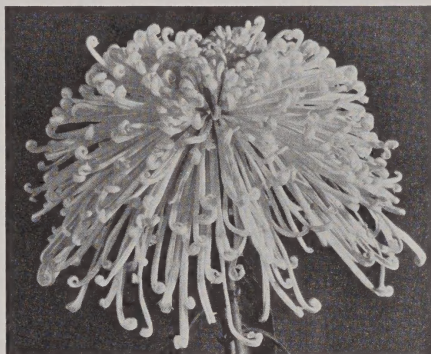
One each of the following:

SUNNYSLOPE BRONZE	DAIKINKA
FALON KIRK	SUNNYSLOPE GOLD

GWEN PATTON
 Catalog price \$3.25

Collection Offer.....

\$2.50



SAN GABRIEL. Yellow spider of medium tubular type. One of the largest spidery varieties we know. Excellent in pot for exhibition purposes. Height 4 feet. Matures around October 25th. PRICE 50c each; \$5.00 per dozen.

~~~~~  
**"CHRYSANTHEMUMS UNDER GLASS AND OUTDOORS,"** by Alex Lurie. We sell and recommend this book. Persons seeking further technical information on Chrysanthemums will find this volume interesting and helpful. Price \$1.50.  
 ~~~~~



OHGON NO HIKARI (Ichimonji type). Brightest yellow in this type. This novelty will be received enthusiastically by all show exhibitors. Also splendid for cut flowers when grown in sprays. Height about 4 feet. Blooms around Oct. 25th on. Price 50c each; \$5.00 per dozen.

STANDARD SPIDER VARIETIES

RATE: Dozen rate is 10 times the unit price.

12 of one NAME at dozen rate

BRONZE

	Height	Ea.	Season
P Azuma. Excellent bronze. See illustration.....	Med.	\$.35	(M)
P Bess Witt. Orange bronze. Sport of Peggy Ann Hoover.....	Med.	.35	(E)
Bronze Cheer. Fine tubular petals with open center.....	Med.	.25	(M)
Bronze Chief. Fine tubular petals.....	Med.	.25	(L)
*Daisen. Golden bronze. Partially incurved.....	Med.	.25	(M)
*Mamoru. Orange. See color plate.....	Med.	.25	(M)
Miss Gina Harwood. Straw color bronze.....	Tall	.15	(E)
*October Maple. Flower shape like Mamoru. Color deeper bronze.....	Med.	.25	(M)

PINK-LAVENDER

*Bunbu. See illustration in color.....	Med.	.25	(M)
Gyokuren. Light pink. Fine tubular type.....	Med.	.50	(M)
Lavender Gown. Deep lavender. Large tubular type.....	Med.	.50	(M)
*Mauve. Color deep lavender. Medium tubular petals.....	Med.	.25	(M)
P Peggy Ann Hoover. Light pink. Medium tubular type.....	Med.	.10	(E)
*Pink Fantasy. Light pink. Medium tubular petals with open center.....	Med.	.25	(M)
P Pink Velvet. See color illustration of front cover.....	Med.	.35	(L)
P Pride of Sunnyslope. Deep lavender. Very full medium tubular petals.....	Tall	.35	(E)
Rayon. Pink. See illustration.....	Tall	.75	(L)
Rayonante. Long cordlike petals.....	Tall	.10	(E)
P Seijin. Excellent early light pink. Large tube. Very graceful.....	Med.	.50	(E)

RED

*Unique. Rich wine red. Fine tubular type.....	Tall	.15	(L)
--	------	-----	-----

WHITE

P *Alice Tashima. Large tubular type.....	Tall	.35	(E)
Antoinette Bush. See illustration.....	Tall	.35	(E)
P *Arctic. Medium tubular type. Very full and graceful flower. Best seller.....	Med.	.25	(E)
Cream White. Medium tubular petals.....	Med.	.25	(M)
P *Dainty White. See illustration.....	Med.	.25	(M)
*Glistening White. Medium tubular petals of good substance with green center.....	Tall	.25	(L)
P Gallant Knight. Medium tubular type.....	Short	.50	(L)
Kay Tashima. See illustration.....	Med.	.25	(E)
*Maria. Greenish cream. Large tubular type.....	Med.	.25	(M)
Pride of Tokio. Cream. Medium tubular type.....	Tall	.15	(L)
Rayonante White. Sport of Rayonante.....	Tall	.15	(E)
P Silver Drops. See illustration.....	Short	.35	(L)
Silver Lace. Medium tubular petals.....	Med.	.25	(M)
*White Frill. Medium tubular petals. Very good for cut flower market.....	Med.	.25	(M)
*White Sensation. See illustration.....	Med.	.25	(M)

YELLOW

Mrs. Margaret Donohue. See illustration.....	Med.	.25	(M)
P Ohkwan. See illustration.....	Med.	.15	(M)
P San Gabriel. See illustration.....	Med.	.50	(E)
P *San Marino. See illustration.....	Med.	.50	(L)
*Sue Sally Jones. See illustration.....	Med.	.50	(M)
Tachibana. Very fine petals like ostrich plume.....	Med.	.25	(L)
Wm. C. MacCabe. Good golden. Large tubular type.....	Tall	.25	(M)

GREEN

P *Nightingale. See illustration in color.....	Med.	1.00	(M)
--	------	------	-----

(E) Early (M) Midseason (L) Late

P—Good for pot culture.

*—Good for commercial cut flower.



RAYON (Pink)

Fine long tubular petals; diameter, 14 inches. Grows to about 5 feet tall with nice foliage. Matures November 10 on. 75c each.



SILVER DROPS

This variety is ideal for pot culture. The petals are fine tubular with hooked end tips. Height 3 to 3½ feet. Matures November 10 on. Price 35c each.



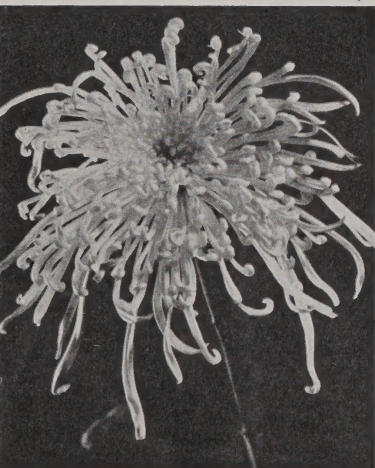
WHITE SENSATION (White)

Large tubular petals; diameter, 12 inches. Strong stem together with nice foliage makes excellent cut flowers. Matures October 25 on. 25c each.



DAINTY WHITE (White)

Fine tubular type petals with hooked-up tips. Diameter 12 inches. Matures around October 25 on. Height, medium. 25c each.



ANTOINETTE BUSH (White)

Large long tubular petals; diameter 15 inches. Height tall and matures around October 20. 35c each.



MRS. MARGARET DONOHUE (Yellow)

Fine tubular petals; diameter, 12 inches. Excellent for pot culture. Matures October 25. 25c each.

Sunny Slope Mums Gardens are constantly offering NEW and beautiful chrysanthemum varieties of their own creation.

Odd Varieties and Interesting Forms

**RATE: Dozen rate is 10 times the unit price
12 of one NAME at dozen rate**

		Ea.	Season
P Fumiko Tashima. See illustration.....	.50		(M)
P G. Konno. Salmon bronze. Very odd swirled center.....	.25		(M)
Jiu Jitsu. White feathery type.....	.15		(M)
Hachimanzan. Color red. Mobiled type. Petals will swirl more completely some season than in another.....	1.00		(M)
P Kegon No Taki. See illustration.....	.35		(M)
P Kimie Tashima. See illustration.....	.50		(L)
Lavender Feather. Deep lavender feathery type.....	.10		(M)
Mignonette. Yellow. Like a thistle blossom.....	.25		(M)
Nunobiki. White. Shape like Kegon No Taki.....	.35		(M)
Pauline. Yellow tubular petals with spoon ends.....	.10		(M)
P Pink Exquisite. Excellent pink. Swirled center. Splendid for sprays; see illustration.....	.25		(M)
P Purple Frost. Deep purple. Broad feathery petals with silvery tips. Good disbudded.....	.25		(L)
*Robert Bacon. Bronzy red tubular petals with golden spon-end tips.....	.15		(L)
The Dean. White Feathery Type.....	.15		(M)
Taggart, J. C. Bronze. See illustration.....	.25		(M)
Taggart, Yellow. See illustration.....	.15		(M)
White Thread. Like tangled ball of threads.....	.15		(M)
Yoki Improved. White tubular petals with spoon tips.....	.15		(M)
Yomei. Golden tubular petals with red spoon-end tips. Exact reverse of Robert Bacon.....	.15		(L)

P—Good for pot culture. *—Good for cut flowers.
(E) Early (M) Midseason (L) Late

Ichimonji Types

(Broad petalled single types)

These varieties have very large, broad petals having the appearance of a large single dahlia bloom. Common with smaller singles, the colors are very vivid and bright for these varieties. If the soil is rich, do not feed them heavily. Excellent in sprays or when disbudded. Very effectively used for floral arrangements. Grows to about 3 to 4 feet tall. Blooms October 25th on.

GOKOKU NO KAMI. Bronze.

FUYO NO MINE. White.

SHIHODEN. Lavender. (See illustration in color.)

OHGON NO HIKARI. Bright yellow. See illustration.)

PRICE: 50c each. One of each of 4 varieties above \$1.75.



FUYO NO MINE



**Collection Offer C
NOVELTIES**

One each of the following:
FUMIKO TASHIMA KEGON-NO-TAKI
HACHIMANZAN WILLA TEMPLIN
SAN GABRIEL OHGON-NO-HIKARI

Catalog price \$3.35

Collection Offer..... **\$250**

← **Kegon No Taki.** A bright yellow. One of the most popular varieties in Japan. The blooms have few layers of reflexive lower petals with the balance of incurved but twisted petals. Grows quite tall, maturing around Nov. 1. 35c each; \$3.50 per dozen.

→ **Taggart's.** Quilled petals covered with hair, comes in yellow and bronze.





KIMIE TASHIMA

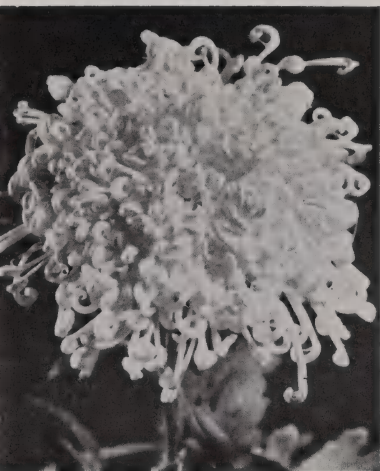
Very bright golden novelty single. Can be grown in sprays and when disbudded will have blooms well over 8 inches in diameter. Height 3 feet. Matures November 1st on.

PRICE 50c each; \$5.00 per dozen.



OHKWAN (Yellow)

One of the older varieties. Fine tubular petals with strong stems and good foliage. Matures around November 1. 15c each.



KAY TASHIMA (White)

Extremely full blooms with protuberant center. Large long tubular petals. Grows to medium height with excellent foliage. Matures October 1 on. 25c each.



ABOVE: MIGNONETTE

BELOW: PINK EXQUISITE

SUE SALLY JONES

Large tubular yellow spider. Of the numerous spider varieties we have handled, we believe this variety has the near perfect qualifications for being an excellent commercial cut flower in this class. The stocky stem will easily support this excellent flower. Height 5 feet. Matures Nov. 5th on.

PRICE 50c each; \$5.00 per dozen.



BEN TASHIMA

A splendid exhibition type of special merit. Deep purple with silver reverse. Grows to about 4½ feet. Maturing November 1st on. Price 50c each; \$5.00 per dozen.



FUMIKO TASHIMA

Light pink odd novelty. Very excellent for pot culture. Garden lovers who are seeking something different will find this variety very interesting. Will grow to 3 feet tall, blooming around Nov. 5th. Price 50c each; \$5.00 dozen.



CASCADE VARIETIES

RATE: 10c each, \$1.00 dozen; 15c each, \$1.50 dozen; 25c each, \$2.50 dozen.

Dozen rate applies to one dozen of one name.

	Each	Season
Anna. White single with yellow center. Blooms prolifically.....	\$.10	(M)
Aggapina. Bronze anemone type.....	.15	(M)
Chiyo. Excellent reddish bronze anemone.....	.25	(M)
Chushin. Bright red single with yellow center.....	.25	(M)
Comet. Pinkish cream anemone type.....	.15	(L)
Eastern Star. Lavender anemone type.....	.25	(L)
Evening Star. An outstanding brilliant yellow anemone type with deep golden cushion.....	.25	(M)
Firefall. Deep red single type.....	.25	(M)
Halloween. (RC-30) Bronze anemone type.....	.25	(M)
Helena. (3-5 Lavender) Lavender single.....	.25	(M)
Hokow. Very good pink. Spoon-like petals.....	.25	(M)
Huyo. Light pink. Very long grower. Anemone.....	.25	(M)
Jane Harte. Yellow sport from Anna. See illustration.....	.10	(M)
Koto. Yellow single of spoon-end type.....	.15	(M)
Koyen. Yellow anemone type with large petals.....	.15	(M)
Lavender Mist. Lavender anemone type. Very branching type.....	.25	(M)
Lilac Veil. Purple anemone type. Very easy grower.....	.25	(M)
Meiyo. Gold with open spoon-end red. Very late.....	.25	(L)
Moonlight. Yellow spoon type tubular petals.....	.15	(M)
Orion. Reddish bronze. Yellow center with open spoon-end petals.....	.25	(L)
Point Loma. Deep pink. Splendid grower.....	.35	(M)
Purple Queen. Purple anemone type. Excellent grower.....	.15	(M)
Seion. White anemone type with yellow cushion.....	.15	(E)
Shirley. (RC-33). Yellow spoon type single.....	.25	(L)
Snow on the Pine. Spoon type white single.....	.15	(E)
Spring Mist. Lavender feathery type. Excellent variety.....	.35	(M)
Suroku. White anemone with large yellow cushion.....	.15	(E)
Tensei. Soft pink spoon type single.....	.25	(M)
Toyen. Excellent pink single.....	.15	(E)
Yamabuki. Yellow anemone type with large cushion.....	.15	(L)

(E) Early

(M) Midseason

(L) Late

Jane Harte (Yellow)

6x10 feet. Picture shows one season's growth started from cutting in February. 10c each.



Cascade Types

Top: Anemone types.
Bottom: Singles, tubular, and spoon-end types.



Cascade Collection No. 1

(Types: Anemones and Singles)

One each of the following:

- HALLOWEEN..... Bronze
 - LAVENDER MIST..... Lavender
 - LILAC VEIL..... Rose
 - ANNA..... White
 - YAMABUKI..... Yellow
 - FIREFALL..... Red
- Catalog price \$1.25

Collection Offer . . \$100

Cascade Collection No. 2

(Types: Singles and Tubular Petals)

One each of the following:

- CHUSHIN..... Red
 - HELENA..... Lavender
 - MEIYO..... Red and Gold
 - POINT LOMA..... Pink
 - TENSEI..... Soft Pink
 - SHIRLEY..... Yellow
 - HOKOW..... Lovely Pink
- Catalog price \$1.80

Collection Offer . . \$150

Culture for Cascades



Tying and Pinching (see drawings and photos)

TYING AND PINCHING (See drawings and photos above). When the plant grows to about 12 inches tall (drawing No. 1) it is bent from about the middle and the end tied to a fairly long No. 12 size galvanized wire which is bent at an angle of 45 degrees (as in Fig. 2). The supporting wire should point to north and the leader must be tied to it with raffia (Figs. 2 and 3) at least every seven days. All the laterals and the sub-laterals should be pinched at every second or third joints as in Fig. 2, and this operation should be repeated continuously as they grow until around September 15th. As the plant increases in width an additional support is necessary to prevent toppling over on one side as in Fig. 4. The main leader is lowered gradually so that it will be in the horizontal position around September 15 as in Fig. B. When the buds begin to form the main stem starts the gradual vertical bending from its horizontal level with the surface of the plant now facing south as in Picture 5. When the buds show color, the pot is placed on high position so that the sprays will not touch the ground and bent to the final vertical position (as in Fig. C. Also see cut for Jane Harte).

PREPARATION OF SOIL. Prepare the compost by mixing well three-fifths by volume of medium heavy loam and the balance two-fifths of leaf mold and well decayed cattle manure (proportion of two-thirds leaf mold and one-third manure). In addition to this a five inch potful of bone-meal may be added to every three bushels of this soil. This compost may be prepared in large quantity and can be stored in shelter for later use.

FERTILIZER. Twice a month applications of commercial fertilizers (Gaviota, vigoro, etc.) should be made during the growing months starting from early June up to the formation of their buds. The amount of fertilizer to be used depends largely upon the size of the plant. It is cautioned not to over-feed the plant, always remembering that very light applications frequently made are far better than over-dosing the plant at any single application.

RE-POTTING. The plants should be shifted into 6-inch pots when bought from us in little pots. Further two to three shiftings into larger pots are required during the season, and these shifts should be made before the plants form their first root network on the inside of the pot. The final potting may be made about the middle of August and the sizes of pots used depends on the size and variety.

To our Friends and Customers

WE WISH to express our deep appreciation to every one of our friends and patrons for their loyal support, enabling our Annual Chrysanthemum Show always eclipsing that of the previous year. Within a relatively short number of years we have expanded and now we consider ourselves the largest chrysanthemum propagators in the West, which we believe, is the result of your loyal support and encouragement, and we are forever grateful to you.

We have listed in this catalog only the varieties that have been popularly approved by thousands

of discriminating garden enthusiasts, whose orders we have tabulated after the fall show. It is therefore safe to conclude that any of the following are generally accepted and proven best varieties in their particular classes without our specific recommendations.

We hope the cultural suggestions for Cascades and other chrysanthemums appearing elsewhere in this catalog will be of some assistance to you. Our cuttings of chrysanthemums are taken from strong and healthy **FIELD GROWN PLANTS**.

SUNNY SLOPE 'MUMS GARDENS.

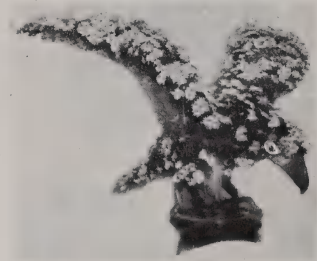
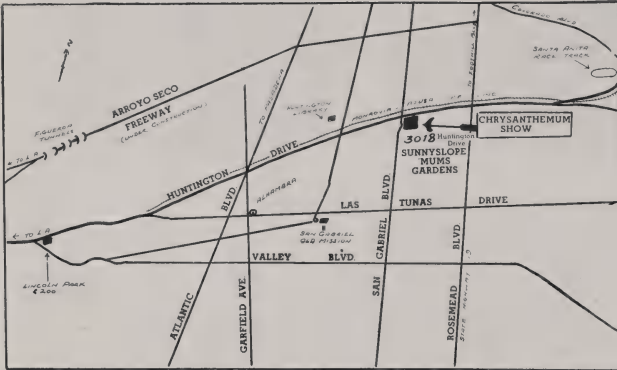
HOW TO REACH OUR NURSERIES

From Long Beach and South. Take Rosemead Blvd. (Highway 19) to Huntington Drive. Turn left on Huntington Drive to our Nursery.

From Hollywood and North. Take Colorado Blvd. through Glendale, Eagle Rock, and Pasadena to San Gabriel Blvd.

Turn right on San Gabriel Blvd. to Huntington Drive. Our Nursery is near the S.E. corner of the intersection.

From Riverside and Pomona Districts. Take Foothill Blvd. (Highway 66) to Huntington Drive at Arcadia. Follow West on Huntington Drive to our Nursery.



Cascade Chrysanthemum trained into Eagle shape planted in pot.



Section of Front Entrance To Our Show and Portion of Large Flo



View showing large specimen show plants. The center background shows a single plant 12 feet in diameter with 500 blooms. Left, pyramid shaped Bess Witt; right, Nightingale.

Chrysanthemum enthusiasts attend our big show every year. It is conceded the best in the west.



Flowering Exhibit

FREE ANNUAL CHRYSANTHEMUM SHOW

The pictures on these pages are partial views of our **CHRYSANTHEMUM SHOW** which we hold at our Gardens every fall. Our show runs over 60 days starting with varieties blooming in early October and ending with late sorts in December. Your garden requirements for early, midseason, and late blooming varieties can be easily selected when chosen during these different seasons.

SUNNYSLOPE WHITE—*the outstanding Commercial White for Thanksgiving*



This large flower is perfectly incurved ball type of very solid substance enabling long distance shipments without bruising or crushing. We have forced this variety for September flowering under shade. It has a very strong stem and perfect foliage. Surely this is one variety we can recommend to commercial growers without any reservation. Height 4½ feet. Normally blooms November 20th on. PRICE: 25c each, \$2.50 dozen.

Large Flowering Commercial Varieties

Please note: 12 of one name at dozen rate.

BRONZE

	Each	Doz.	Sea- son
*Apricot Chieftain (Sunset), Incurved	.15	1.50	(E)
*Apricot May Wallace, Good China Mum**	.10	.50	(L)
Apricot Queen, Apricot bronze, Semi-incurved	.15	1.50	(E)
Bronze Frick, Incurved	.10	.50	(L)
*Detroit News, Best early	.10	.50	(E)
*Glitters, Deep orange bronze, Reflexed	.10	.50	(E)
*Hilda Bergen, Reddish bronze	.10	.50	(E)
Indianapolis Bronze, Incurved	.25	2.50	(E)
*Keystone, Good incurved	.10	.50	(E)
Mikado, Red and gold reflexed	.10	1.00	(M)
Okeca, Reflexed	.10	.50	(E)



OHGON NO SATO (Yellow)

One of our Imported Commercial large flowering varieties. Bears very large blooms of compact incurve types. Matures Oct. 25 on. 25c ea.

PINK-LAVENDER

*Adonia, Good pink, Reflexed	.15	1.50	(M)
*Chieftain, Good incurved pink	.10	.50	(E)
Distinction Pink, Incurved	.10	.50	(L)
*Edwin Seidwitz Improved, Pink, Incurved	.10	.50	(L)
*Gwen Patton, See color plate	.50	5.00	(M)
Helen Frick, Lavender, Incurved	.10	.50	(L)
*Indianapolis Pink, Incurved	.25	2.50	(E)
Major Ed. Bowes, Lavender, Incurved	.15	1.50	(E)
*May Wallace, Good pink China Mum**	.10	.50	(L)
Orchid Queen, Incurved, Orchid pink	.15	1.50	(E)
*Peter John, Deep rose pink, Reflexed	.15	1.50	(L)
Pink Dawn, Incurved	.15	1.50	(E)
*Prosperity, Large incurved pink	.15	1.50	(E)
*Thanksgiving Pink, Amaranth reflexed	.10	.50	(L)

RED-PURPLE

*Bonnaffon Red, Incurved	.10	1.00	(L)
*Garnet King, Dark red, Reflexed	.10	.50	(M)
Governor Green, Red and gold, Reflexed	.15	1.50	(M)

	Each	Doz.	Sea- son
*Harvard, Deep red, Reflexed	.10	.50	(L)
Intensity, Deep red, Reflexed	.10	1.00	(L)
*Mohawk Chief, Deep red, Reflexed	.10	.50	(L)
*Mrs. David F. Roy, Red and gold, Incurved	.15	1.50	(E)
Murillo, Deep red, Good China Mum**	.15	1.50	(L)

WHITE

*Albatross, Incurved	.15	1.50	(M)
Chattanooga, Incurved	.10	.50	(L)
Chieftain White, Incurved	.10	.50	(E)
*December Beauty, Improved, Incurved	.15	1.50	(L)
*Early Quality, Incurved	.15	1.50	(E)
*Marketeer, Very good	.15	1.50	(L)
*Miss Flora Bowers, Incurved large	.25	2.50	(M)
*Monument, Ivory white, Incurved	.10	1.00	(L)
Ohyuki, Large improved ball shape	.35	3.50	(M)
Quaker Lady, Incurved	.10	1.00	(L)
Quaker Maid, Reflexed	.10	.50	(E)
Silver Wedding, Reflexed	.10	.50	(L)
*Sunnyslope White, See illustration	.25	2.50	(L)
White Frick, Incurved	.10	.50	(L)

YELLOW

*Blazing Gold, Deep golden yellow, Good China Mum**	.15	1.50	(E)
Bonnaffon, Incurved	.10	.50	(M)
Bonnaffon Shibuya, Incurved late	.10	.50	(L)
Chattanooga Yellow, Lemon yellow, Incurved	.10	.50	(L)
*Columbus Dispatch, Golden incurved	.10	.50	(L)
Comet, Deep lemon yellow, Incurved	.25	2.50	(E)
December Queen, Reflexed	.10	.50	(L)
*Dolly Dimple, Reflexed	.10	.50	(L)
*Evening Glow, Large incurved	.10	.50	(E)
Friendly Rival, Incurved	.10	1.00	(L)
*Good News, Excellent early	.10	.50	(E)
Jubilee, Lemon yellow, Incurved	.15	1.50	(M)
*Mrs. H. E. Kidders, Deep yellow	.10	.50	(E)
Mrs. R. M. Calkins, Semi-incurved	.10	.50	(L)
*Ohgon No Sato, Incurved, See illustration	.25	2.50	(M)
Roman Gold, Golden reflexed	.10	.50	(M)
*Sungold, Golden, semi-incurved	.10	.50	(L)
*Sunnyslope Gold, Very large incurved	.25	2.50	(E)
Yellow Gold, Incurved	.10	1.00	(M)
Yellow Gown, Very early, Good China Mum**	.10	.50	(E)
*Yellow Monument, Lemon yellow, Incurved	.15	1.50	(L)

*Varieties proven or generally accepted as best for cut mum.

**China Mum—to grow 4 to 6 blooms per plant to obtain medium size flowers.

E—Early; M—Midseason; L—Late varieties.

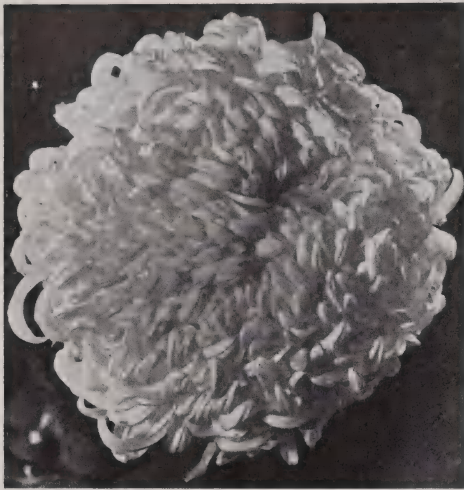
Exhibition Varieties

RATE: Dozen rate is 10 times the unit price. 12 of one NAME at dozen rate.

BRONZE

	Each	Sea- son
*Appert, Lovely apricot bronze, Incurved	1.00	(M)
*Certainty, Largest late bronze, See illustration	.25	(L)
Conquest, Very large incurved	.25	(E)
*Country Maiden, See illustration	.50	(M)
Majestic, Amber bronze, Reflexed	.15	(L)
Mrs. Allen, Shaggy	.15	(M)
*Mrs. August Koch, Light apricot bronze, Shaggy	.15	(M)
Mrs. Rita Mitchell, Large semi-incurved	.15	(L)
Sec. Hyde, Pinkish bronze, Incurved	.15	(L)

(Continued on next page)



POCKETTS VARIETY—EXHIBITION TYPE
Come in Four Colors.

EXHIBITION VARIETIES (Continued)

	Each	Season
Turner Bronze. Light bronze incurved.....	.15	(E)
Willa Templin. See illustration in color.....	.50	(M)
Wm. H. Waite Imp. Reddish bronze. Reflexed.....	.25	(M)

PINK-LAVENDER

Ann Nichols. Pink. Incurved.....	.15	(M)
Buto. Pink. Incurved.....	.15	(E)
Elberon. Pink. Semi-incurved.....	.15	(M)
*Hilo. Light pink. See illustration.....	.25	(M)
Ilo. Delicate pink. Incurved.....	.35	(E)
Joyful. Lavender. Incurved.....	.50	(L)
*Lady Hopetoun. Pink. Reflexed.....	.10	(E)
*La France. Lavender with silver reverse. Incurved.....	.15	(E)
Mary L. Clark. Light pink. Semi-incurved.....	.15	(M)

	Each	Season
*Mrs. Hilda Hayward. Orchid lavender. Incurved.....	.50	(E)
*Nerrisa. Pink. Incurved.....	.15	(L)
Percy Lancaster. Pink. Reflexed.....	.50	(L)
Princess Teru. Pink. Reflexed.....	.15	(L)
*Thos. Pockett. Pink. Semi-incurved.....	.15	(M)
*Turner Pink. Light pink. Large incurved.....	.25	(E)
Vermont. Pink. Shaggy.....	.15	(M)

RED-PURPLE

*Armistice Day. Red and gold. Reflexed.....	.15	(L)
*Ben Tashima. See illustration.....	.50	(L)
*Birmingham. Excellent crimson. Semi-incurved.....	.25	(M)
Clara Trueman. Red and gold. Reflexed.....	.50	(M)
*Dr. J. M. Inglis. Purple with silver reverse.....	.15	(M)
Elisa Freu. Red and gold. Semi-incurved.....	.35	(M)
Enton Beauty. Deep red. Semi-incurved.....	.25	(M)
*Grace Sturgis. Purple with silver reverse.....	.25	(L)
Henry Woolman. Red and gold. Semi-incurved.....	.50	(E)
*J. W. Gardner. Loosely incurved. Very popular.....	.25	(M)
*Remus. Purple. Reflexed.....	.25	(L)
Tom Carrington. Purple. Incurved.....	.10	(L)

WHITE

Alice Benson. Semi-incurved.....	.15	(M)
*Boake Carter. Semi-incurved.....	.25	(M)
*Crystal Dome. Large dome shape flower.....	.15	(E)
*Falon Kirk. Large, incurved.....	.50	(E)
Helena Pockett. Semi-incurved.....	.25	(E)
*Henry E. Trueman. Large. Semi-incurved.....	.25	(E)
*Louisa Pockett. Very large. See illustration.....	.15	(M)
*Nerrisa White. Incurved.....	.15	(L)
Vermont White. Large shaggy.....	.15	(M)
William Turner. Incurved. Very large.....	.15	(E)

YELLOW

Ellen Mackay. Shaggy.....	.50	(L)
*Golden Arbin. Reflexed.....	.15	(E)
Golden Champion. Very large reflexed.....	.15	(E)
Golden Harp. Incurved. See illustration.....	.25	(M)
*Golden Pockett. See illustration.....	.25	(M)
*Harvest Moon. Very large excellent variety.....	.75	(M)
*Yellow Pockett. See illustration.....	.15	(M)
Yellow Turner. Incurved. Very large.....	.15	(E)

*Recommended variety.

E—Early; M—Midseason; L—Late varieties.



GOLDEN HARP

Very large deep golden exhibition incurve type. Flower will easily grow 8 to 10 inches in diameter from any bud. Height 4½ feet, blooming around October 15th on.

PRICE: 25c each, \$2.50 per dozen.



HILO

Pinkish buff exhibition type. This attractive flower has excellent foliage and is supported with strong stem. Height 4 feet. Matures around October 20th on.

PRICE: 25c each, \$2.50 per dozen.



COUNTRY MAIDEN

Exhibition type. A very compact incurve flower of apricot bronze, having very wide petals forming a perfect ball. This flower has very excellent foliage and strong stem. Height 4 feet. Matures October 25th on.

PRICE: 50c each, \$5.00 per dozen.

Pompons and Buttons

RATE:	Each	Dozen	12 of one name at dozen rate.
	\$.10	\$.50	
	.15	1.25	
	.25	2.00	

BRONZE—Orange

	Each	Season
Avalon. Int. Pom.....	.10	(L)
Bonnibel. Button.....	.10	(E)
*Bristolite. Int. pompon. Very good.....	.10	(L)
Bronze Perfection. Button.....	.10	(M)
Burma. Int. Pompon.....	.15	(M)
*California Firebird. Decorative.....	.10	(L)
Cavalcade. Small pompon.....	.15	(L)
Clara Jameson. Small pompon.....	.10	(E)
Dusky Maid. Int. pompon.....	.15	(L)
Fez. Small pompon.....	.15	(M)
Firebird. Decorative.....	.10	(E)
*Glow. Dark red center. Int. pompon.....	.10	(L)
Itsa. Button.....	.10	(M)
*Joan Wells. Dark center. Small pompon.....	.10	(E)
*Karia Bronze. Very late Int. pompon.....	.10	(L)
*Millo Astell. Decorative.....	.10	(E)



POMPONS—DISBUDED

True Pompons are small blossoms which are either flat or globular as in Pompon Dahlias and Zinnias. Diameters ranging from less than 1 inch to 3/2 inches.

Nesta. Int. pompon.....	.10	(M)
*New York. Int. pompon.....	.10	(M)
Norine. Button.....	.10	(M)
November Bronze. Int. pompon.....	.10	(M)
*Wildfire. Int. pompon.....	.10	(L)

PINK—Lavender-Purple

Angelo. Large pompon.....	.10	(E)
*Amaranthea. Purple. Int. pompon.....	.15	(L)
Bonnie Maid. Int. pompon.....	.10	(M)
*Bobette. Dark center. Button.....	.25	(L)
Califloral Beauty. Purple. Int. pompon.....	.25	(L)
Califloral Pride. L. Pink pompon.....	.25	(M)
Dorothy Nehrling. Rose button.....	.10	(M)
*Dr. W. R. Pettit. Large pompon.....	.10	(E)
Elora. Int. pompon.....	.10	(E)
*Highlight. Dark center. Int. pompon.....	.10	(M)
*Jewell. Small pompon.....	.10	(E)
Kaino Pink. Large pompon. Late.....	.10	(L)
*Letitia. Int. pompon.....	.10	(M)
Little Tot. Button.....	.10	(M)

	Each	Season
*Masterpiece. Large pompon. Excellent.....	.10	(M)
Mission. Maroon center. Int. pompon.....	.10	(M)
*Mother of Pearl. Int. pompon.....	.15	(L)
*Mrs. Morgan Bulkeley. Small pompon.....	.15	(M)
*Mrs. Nellie Kleris. Int. pompon.....	.10	(E)
Muldoon. Purple. Int. pompon.....	.10	(E)
*Pink Dot. Int. pompon.....	.10	(E)
*Pink Doty. Large pompon.....	.10	(E)
*Prosperity-Pom. Large pompon.....	.25	(L)
Robert Henderson. Rose button.....	.10	(L)
Romola. Large pompon.....	.10	(M)
Rose Adore. Int. pompon.....	.10	(E)
Rosy Dot. Button.....	.10	(M)
San Antonio. Large pompon.....	.15	(L)
Shaker Lady. Large pompon.....	.10	(M)
Shiela. Rose. Int. pompon.....	.15	(M)
*Thyra. Lavender. Large pompon.....	.10	(M)
*Treasure Island Pink. Large pompon.....	.10	(L)
*Viola. Small pompon.....	.10	(E)

RED

*Campfire. Int. pompon.....	.10	(M)
*Christmas Red. Red button.....	.10	(L)
Crimson Quintus. Decorative.....	.10	(M)
Crimson Sheen. Large pompon.....	.15	(E)
Ethel. Button.....	.10	(M)
*Fireball. Large pompon.....	.10	(E)
*Helen Hubbard. Decorative.....	.10	(L)
*Izalco. Large purple pom. Good disbud.....	.25	(L)
*Karia Red. Int. pom. Good for Xmas.....	.15	(L)
*Mrs. Mary Hooker. Int. pompon.....	.10	(L)
Patsy Dawd. Button.....	.10	(M)
Robin Hood. Button.....	.15	(M)
*Royal Crimson. Good large pompon.....	.15	(L)

WHITE

*Arcadia. Large pompon.....	.10	(E)
Bright Spot. Button.....	.10	(M)
Chicago Pearl. Int. pompon.....	.15	(M)
Clare. Button.....	.10	(M)
Cordova. Large pompon.....	.10	(L)
*Crystal Jewell. Button.....	.10	(M)
*Crystal White. Large pompon.....	.10	(M)
Dainty Maid. Button.....	.10	(M)
*Greta. Large pompon.....	.10	(E)
*Helen Newberry. Small pompon.....	.10	(L)
Karia White. Int. pompon for Xmas.....	.10	(L)
Kuwahara White. Int. pompon.....	.10	(L)
Mary Pickford. Button.....	.10	(M)
*Memories. Int. pompon.....	.25	(L)
Oct. Snow. Button.....	.15	(E)
Pearl. Int. pompon.....	.25	(M)
*Rev. Horace Bushnell. Small pompon.....	.15	(E)

(Continued on next page)



BUTTONS

POMPONS AND BUTTONS (Continued)

	Each	Season
Sea Gull. Int. pompon.....	10	(E)
*Silver Ball. Pure white. Int. pompon.....	10	(E)
Snow. Int. pompon. Very late.....	25	(L)
*White Dot. Good disbudded. Large pompon.....	10	(E)
White Gem. Button.....	10	(M)
White Pearl. Button. Late.....	15	(L)
*White Light. Good int. pompon.....	25	(E)
White Tonquin. Ivory button.....	15	(L)
*White Treasure Island. Large pompon.....	10	(L)

YELLOW

*Adorable. Button.....	10	(L)
Agate. Button.....	10	(M)
Baby. Very small button.....	10	(M)
Brown Eye. Small pompon.....	25	(L)
*Canary. Int. pompon.....	25	(L)
*Claremont. Decorative.....	10	(L)
*Geraldine. Button.....	10	(L)
*Golden Charm. Small pompon.....	15	(E)
*Golden Cordova. Large pompon.....	15	(L)
*Golden Fairy. Large pompon.....	10	(E)
*Golden Spray. Int. pompon.....	10	(E)
*Hasegawa Yellow. Int. pompon.....	10	(L)
*Judith Anderson. Button.....	10	(E)
Little Billy. Button.....	10	(M)
*Masaka. Large pompon.....	10	(E)
*November Glow. Int. pompon.....	15	(M)
Perfecto. Int. pompon.....	10	(M)
Pirate Gold. Int. pompon.....	15	(M)
*San Diego. Int. pompon. Very late.....	10	(L)
St. Louis Gold. Decorative.....	10	(L)
Treasure Gold. Int. pompon.....	15	(M)
Varsity. Button.....	10	(M)
*Yellow Dot. Small pompon. Good.....	10	(E)
*Yellow Fellow. Int. pompon.....	10	(M)
Yellow New York. Int. pompon.....	10	(M)

*Recommended varieties. Disbud large pompoms.
E—Early; M—Midseason; L—Late varieties.

Anemone Types

RATE:	Each	Dozen	12 of one name at dozen rate.
	\$.10	5 .50	
	.15	1.25	
	.25	2.00	

BRONZE

	Each	Season
Bronze Charm. Intermediate.....	15	(L)
Bronze Supreme. Large. Very late.....	15	(L)
*Bronze Tuxedo. Large.....	15	(M)
Chrome Emerald. Intermediate.....	10	(L)
*Coral Blaze. Large deep orange.....	15	(L)
*Estrelita.....	10	(L)
Jeanette. Bronzy-buff. Large.....	25	(M)
Verona. Large.....	15	(M)
*Yolanda. Small.....	15	(L)

PINK-LAVENDER

*Admiration. Lavender. Large.....	15	(E)
Antigo. Rose. Large.....	10	(M)
*Beautiful Lady. Lavender. Large.....	15	(L)
Birdine. Lavender. Large.....	10	(M)
Brighton. Amaranth. Intermediate.....	15	(M)
*Dorothy Louise. Deep rose sport of Freida.....	25	(M)
*Elizabeth. Light pink. Large.....	25	(M)
*Elsa Piel. Light lavender. Large.....	25	(M)
*Frieda. Lavender pink. Large.....	10	(M)
H. J. Ballough. Lavender. Intermediate.....	15	(M)
*Linda Lou. Deep lavender. Intermediate.....	25	(E)
Long Island Beauty. Light pink. Large.....	15	(L)
Mrs. J. S. Roberts. Deep rose. Large.....	25	(M)

Norma. Light pink. Large.....	10	(M)
Orchid Beauty. Deep orchid. Intermediate.....	10	(L)
Otto Blum. Light pink. Intermediate.....	15	(M)
*Pink Supreme. Light pink. Large.....	10	(L)
*Purple Queen. Purple. Intermediate.....	15	(L)
*Rose Madder. Rose. Large.....	15	(M)
Topknot. Amaranth. Intermediate.....	10	(M)
*Tuxedo. Pink. Large.....	15	(M)
Welcome. Rose. Intermediate.....	10	(M)

RED

*Crimson Glow. Reddish bronze. Large.....	10	(L)
Milton. Wine red. Intermediate.....	10	(M)
*The Titan. Bronzy red. Large.....	10	(M)



ANEMONE—DISBUDED

WHITE ANEMONE

Albans. Intermediate.....	25	(E)
*Blanche. Intermediate.....	15	(M)
Bob White. Large.....	25	(M)
C. D. Wolfe. Dark center cushion.....	10	(E)
*Faith. Cream. Large.....	15	(M)
Garza Supreme. Very late. Large.....	10	(L)
*Little America. Intermediate.....	15	(M)
*Marie Louise. Large.....	15	(M)
Norma White. White suffused with pink. Large.....	15	(L)
Noveltie. Short. Large.....	25	(M)
*Shasta. Intermediate.....	25	(M)
*Sincerity. Large pure white cushion.....	15	(E)
Sulphur Frill. Cream. Large.....	10	(M)
*Swan. Very good late. Large.....	25	(L)
White Cluster. Intermediate.....	15	(L)
White Anemone. Intermediate.....	10	(M)
*White Supreme. Large.....	10	(L)

YELLOW

*Aloysia. Large.....	15	(E)
*Citrus Queen. Very large.....	15	(M)
*Faith Engel. Intermediate.....	15	(M)
*Gleam. Very late. Large.....	25	(L)
Laucella. Large.....	10	(M)
Maritza. Large.....	15	(L)
Mrs. John Shields. Large.....	15	(M)
*New Gold. Intermediate.....	15	(L)
*Wilfreda. Large.....	15	(M)
Yellow Blanche. Intermediate.....	15	(M)
*Yellow Estrellita. Large.....	25	(L)
*Yellow Supreme. Large. Very late.....	10	(L)

*Recommended varieties. Disbud large anemone.
E—Early; M—Midseason; L—Late varieties.

Single Varieties

RATE:	Each	Dozen	12 of one name at dozen rate.
	.10	\$.50	
	.15	1.25	
	.25	2.00	

BRONZE

	Each	Season
G. Herman Kinnicutt. Intermediate.....	.25	(E)
Golden Gleam. Intermediate.....	.10	(M)
Hasegawa Josephine. Intermediate.....	.10	(L)
*Hasegawa Minoru. Intermediate.....	.10	(L)
H. M. Totty. Large.....	.10	(M)
*Ida Skiff. Orange. Large.....	.10	(E)
*Kramer Buff Orange. Large.....	.10	(M)
Meter Bergen. Intermediate.....	.15	(M)
Mrs. Lou Rivers. Intermediate.....	.15	(M)
*Melba. Very good large.....	.10	(M)
*S. B. Garson. Intermediate.....	.10	(M)
Sonny Boy. Intermediate.....	.15	(L)
*Sunburst. Large.....	.10	(L)



SINGLE OR DAISY TYPE

PINK-LAVENDER

*Annabel. Salmon pink. Intermediate.....	.10	(L)
Bijo. Rose pink. Intermediate.....	.15	(M)
*California Peach. Deep rose. Intermediate.....	.10	(E)
Cherry Blossom. Intermediate.....	.25	(E)
Dido. Intermediate.....	.25	(E)
*Dark Pink Valencia. Large.....	.15	(L)
Faithful. Light pink. Large.....	.15	(E)
*Hasegawa Pink. Intermediate.....	.10	(L)
*Kramer's Late Pink. Large.....	.15	(L)
*Margaret Laesser. See illustration.....	.35	(E)
*Pink Pride. Good pink. Large.....	.10	(M)
S. P. Garson. Intermediate.....	.10	(M)
SS. Garson. Shell pink. Intermediate.....	.10	(M)
Sonia Totty. Large.....	.15	(M)
*Valencia. Large.....	.10	(L)

RED

*Carnelia. Large.....	.15	(L)
Crimson Monarch. Large.....	.15	(L)
D. Baker. Large.....	.10	(M)
Hasegawa Poinsettia. Intermediate.....	.10	(L)
*Improved Granadier. Large. Very early.....	.15	(E)
*Lighthouse. Intermediate.....	.10	(M)

	Each	Season
*Marie Kramer. Intermediate.....	.15	(L)
*Melba Red. Large.....	.10	(M)
Red Butterfly. Purplish red. Intermediate.....	.10	(M)
Red Rover. Red and gold variegated. Large.....	.15	(M)
*Radiant. Intermediate. Very good.....	.10	(M)
Scarlet Beauty. Late. Intermediate.....	.25	(L)
*Scarlet Wonder. Intermediate.....	.15	(L)
*Tagoya. Goya red. Intermediate.....	.10	(M)

WHITE

*Gladys Duckham. Intermediate.....	.10	(L)
Mabel Seymour. Intermediate.....	.10	(M)
*Mrs. James S. Kelly. Ivory. Large.....	.25	(M)
*Mori White. Very good disbudded.....	.15	(E)
*Prof. Ball. Large.....	.10	(M)
Ruth. Intermediate.....	.25	(E)
Silver Emblem. Intermediate.....	.25	(E)

YELLOW

*California Yellow Daisy. Intermediate.....	.15	(E)
*Golden Seal. Good disbudded. Large.....	.10	(E)
*Mori Apricot. Good disbudded. Large.....	.15	(E)

*Recommended varieties. Disbud large singles.

E—Early; M—Midseason; L—Late varieties.

Hardy Korean Types

RATE:	Each	Dozen
	\$.10	\$.50
	.15	1.25
	.25	2.00

These varieties are especially recommended for regions where early frosts prevail as they possess hardy, early flowering qualities. Blooming date, Sept. 15 to Oct. 20.

SINGLES

Hee. Red violet.....	.10	(E)
Hu. Yellowish bronze.....	.10	(E)
Mie. Wine red.....	.10	(E)
Nana. Splendid yellow.....	.10	(E)
Yo. Excellent pink.....	.10	(E)
Tao. Light pink.....	.10	(E)
Juhich. Salmon pink.....	.10	(E)
Nisan. Bronze.....	.10	(E)
Sango. Salmon pink.....	.10	(E)
Sanku. Good bronze.....	.10	(E)
Appolo. Reddish bronze.....	.10	(E)
Dephene. Pink.....	.10	(E)
Innocence. White.....	.10	(E)
Melody. Daphne pink.....	.25	(E)

DOUBLES AND SEMI-DOUBLES

(Bloom Sept. 20 on)

Acacia. Sulphur yellow. Semi-double.....	.25	(E)
Autumn Lights. Coppery bronze. Semi-double.....	.25	(E)
Burgundy. Cerise crimson. Double.....	.15	(E)
Caliph. Double crimson.....	.15	(E)
Gleam o' Gold. Primrose yellow. Double.....	.25	(E)
Goblin. Bronze double.....	.15	(E)
Indian Summer. Bronze. Double.....	.10	(E)
Lavender Lady. Lavender. Double.....	.15	(E)
Mandarin. Salmon bronze. Double.....	.15	(E)
Roberta Copeland. Salmon-rose. Double.....	.15	(E)
Rose Glow. Raspberry rose. Double.....	.15	(E)
Saladin. Coral red. Semi-double.....	.15	(E)
Symphony. Coppery rose. Double.....	.15	(E)
The Moore. Wine red. Double.....	.15	(E)

Pot Plant Types

The following pot plant varieties are also recommended for boarder plantings because of their dwarf growing and free branching habits. Those noted with asterisks (*) will commence blooming in July or August until the approach of frosts.

RATE:	Each	Dozen	12 of one
	\$.10	\$.50	name at
	.15	1.25	dozen
			rate.

	Each	Season
Astrid. Pink single.....	.15	(E)
* Amelia. Pink cushion.....	.15	(E)
* Bronze Cushion. Cushion mum.....	.25	(E)
* Cameo Queen. White cushion.....	.15	(E)
* Clara Curtis. Lovely pink single.....	.25	(E)

	Each	Season
Glorietta. Light pink pom.....	.10	(E)
Kuzuka. Light pink intermediate pom.....	.10	(E)
* Little Bob. Red pompon.....	.25	(E)
* Pomponette. Primrose yellow pompon.....	.25	(E)
Royal Red. Red button.....	.10	(M)
Sonia. Wine red button.....	.10	(E)

MANDEL VARIETIES

(Disbud these for best results)

Cincinnati. Golden yellow.....	.25	(E)
Queen of Pinks. Pink Mandel.....	.25	(E)
Richard Mandel. White Mandel.....	.25	(E)
Rose Mandel. Deep lavender.....	.25	(E)
Yellow Beauty. Yellow Mandel.....	.25	(E)

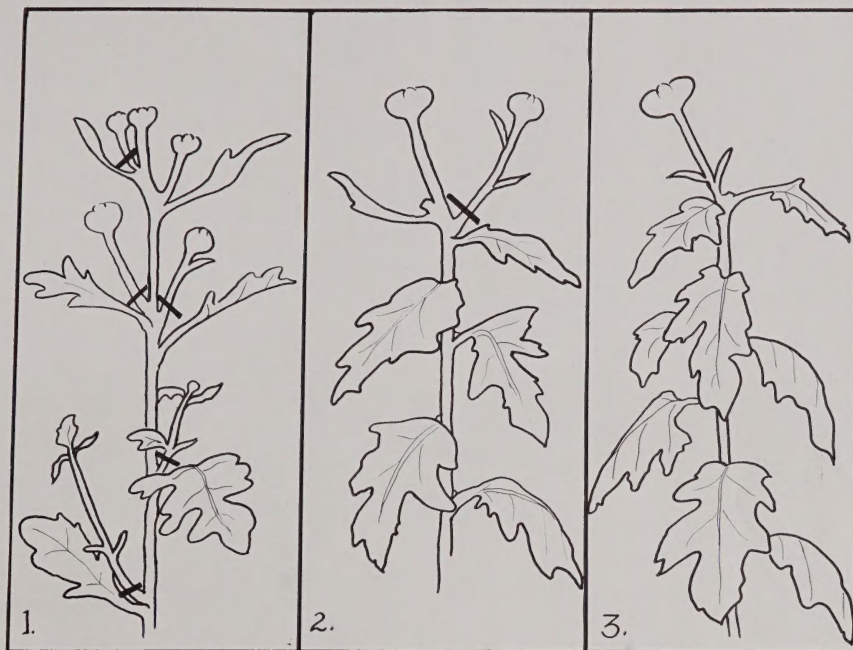


Single stem exhibition flowers arranged in pots.



Spider variety, "ARCTIC" on the left and exhibition variety, "WILLA TEMP-LIN" on the right.

Cultural Suggestions—Commercial and Exhibition Types



SOIL PREPARATION. Prepare the beds early by spading in well decayed cattle manure or bone meal working in thoroughly to a depth of 12 to 15 inches. Use peat if the soil is too sandy or too heavy.

FERTILIZING. Few applications of commercial fertilizers such as "Gaviota," "Vigoro" or other complete fertilizers should be used during the summer months. The feeding should be avoided during the periods of extreme heat or when the soil is too dry. Water the soil before applying if it is necessary. It should be stopped when the buds are large enough to make the final selection (Fig. 2 below).

STOPPING. When the plant is established in your garden and when it has developed 2 or 3 pairs of matured leaves, the center or the main growth is nipped off. Then the plant should be restricted to two or three shoots in order to obtain larger blooms. For the late blooming variety, the main growths of these new shoots may be nipped off again around July 15th in order to regulate the height, allowing only the original number of new shoots to rise per stem.

For the large anemones and pompons, allow 6 to 8 growths to a plant. Other cultures for these being similar with those of the larger flowering varieties.

DISBUDDING (see drawing above). Immediately after the new shoots of your selection begin to send out side laterals, they should be removed very close at the base (see lowest lateral of figure 1) at regular intervals about once a week. The basal shoots should be removed also as they appear. This procedure should be adhered to very religiously in order to obtain successful results.

Culture for Bush or Garden Varieties

Under these types are pompons and buttons, anemones, singles, and hardy Koreans. These varieties are most effective in the gardens when grown low with as much growth as possible. This is obtained by pinching off the center

The first bud produced by the plant is called the "Crown" bud and is distinguished by being surrounded by leaves. The "terminal" bud appears later in clusters surrounded with several flower buds.

The procedure of "taken buds" depends very largely on the variety and no fast rules can be given, but we recommend reserving terminal buds for the Spider types and majority of the early flowering commercial and exhibition types in Southern California. The safest rule, we find, is not to save buds formed before August 20th in our district. The retention of too early crown buds often results with large percentage of crippled flowers, especially when large amount of nitrogen fertilizer remains in the soil unconsumed by the plant. Again, the hottest period of the year usually comes during the month of September and early October, the hazards of burning of petals and fading of colors are too frequent when early crown is retained in this district.

The final selection of bud should not be made too hastily nor when buds are very small (see figure 1). It is also advisable to allow an alternate bud (see figure 2) to remain until one is certain of all defects when final selection is being made (figure 3).

PESTS. Common pests and diseases are thrips, aphids, leaf-tyers, cut worms, mildews, etc. Plants should be examined frequently and sprayed with proper insecticides as recommended by dealers as soon as they are detected. After September 1st we recommend spraying the plants twice a month until buds begin to show color.

STAKING. Every individual stem should be supported with stake or by other means to hold the blooms upright.

of all the laterals two or three times up to the 1st or 10th of August. This method will prevent the plants from topping too freely with minimum support.

Culture for Pot Plants

Pot growing of chrysanthemums should be encouraged in several states where early freezing conditions prevail. When they are pot-grown, they can be easily removed into shelter when the hazards of freezing, wind, and rain occur. Again, especially when the growing ground is limited in the garden, potted plants may find place on the side of walks, on edges of steps or in porches if one-half day sunshine is available.

Mostly all the chrysanthemums of our fall displays are grown in pots. This practice is carried by us because old flowers are being removed constantly as the season progresses. Our display ranges from single flowering exhibition flower to 500-blossoms specimen plant in single container.

Fresh cuttings are potted immediately into 5- or 6-inch pots around May 15th. Plants should not be allowed to

become pot-bound before shifting into larger pots. Other culture being similar to those of ground plantings.

Plants may be allowed to bear flowers as follows:

	No. of stems
EXHIBITION TYPES (when largest blossoms desired)	1
EXHIBITION TYPES (ordinary)	2 or more
COMMERCIAL TYPES	3 or more
SPIDER TYPES	5 or more
DISBUDED ANEMONES, POMPONS, ETC.	6 or more

SMALL BLOSSOMING VARIETIES should be pinched several times to form compact bush. Two or more plants may be placed in a pot if large bush is desired.

Regarding potting soil, fertilizer, and shifting of pots refer to cascade culture on page 11.



ASSORTED TYPES OF CHRYSANTHEMUMS

SPECIAL OFFER—Assorted Collections, including Buttons, Pompons, Singles and Anemones (Non-Labeled)

(Rooted Cuttings)

12	25	50	100
PLANTS	PLANTS	PLANTS	PLANTS
4 Varieties	6 Varieties	8 Varieties	10 Varieties
40c	75c	\$1.40	\$2.50

LARGE FLOWERING COMMERCIAL TYPE

(Rooted Cuttings)

Four Colors Assorted Offer (Non-Labeled)

12	25	50	100
PLANTS	PLANTS	PLANTS	PLANTS
50c	90c	\$1.65	\$3.00



SHIHODEN. "Ichimonji type"

Single broad-petalled flower commonly known as the chrysanthemum of the Imperial Crest. Height about 4 feet. Blooms about Oct. 25th on. Price: 50c each; \$5.00 per dozen.



MAMORU

Dark orange with increasing bronze toward center. Excellent for commercial cut flowers, having strong stem and abundant foliage. The flower is of good keeping quality. Height medium, maturing Oct. 30th on. Price: 25c each; \$2.50 per dozen.



We grow chrysanthemums exclusively

WILLA TEMPLIN

The graceful character of this flower and its most pleasing bronze shade has been acclaimed by many chrysanthemum experts and commercial growers. See page 20 for group display. This exhibition variety is excellent both for commercial cut flower and for pot culture. Height 4 feet. Blooms October 28th on.

Price: 50c each; \$5.00 per dozen.



Sunnyslope Bronze (4-26)

A perfect incurved commercial variety of "Major Bonnaillon" type. The color is most pleasing shade of golden bronze resembling Old Gold. It will not fade under any circumstances, and the petals will not shatter when packed for distance shipments. From our experience this flower has the longest keeping quality either for cut-flowers or for garden exhibition. Suitable for both as Large Mum and for China Mum. Height medium. Normal blossoming period around November 1st on. Price: \$1.00 each; \$10.00 per dozen.